

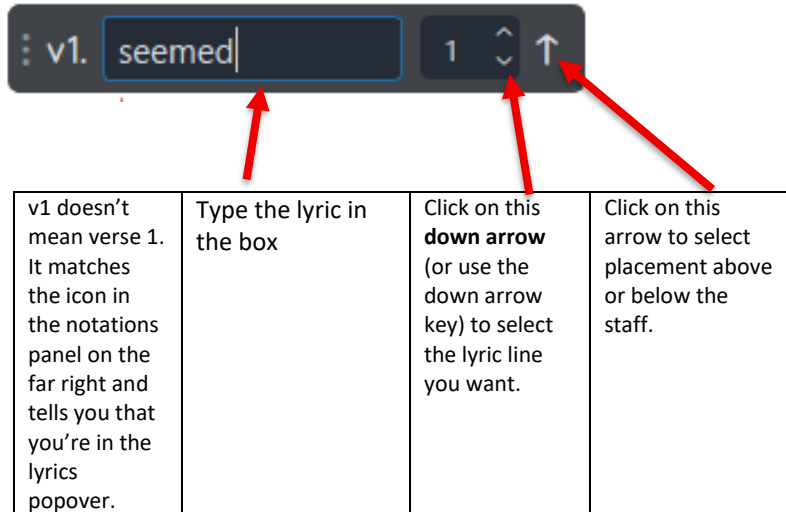
---

## Lyric Popover

This new lyric popover in Version 6 will be a game-changer for barbershoppers who struggle with getting lyrics in the right line and above / below the staff.

Just as before, it's click on the note where you want a lyric and Shift-L to start lyric input. Space or hyphen to advance the popover to the next word; space bar for word extensions that go with melismas.

When you type Shift-L to start the lyric popover what you'll see is this.



Another cool change – Popovers can now be re-positioned! Click and drag on the 3 vertical dots next to “v1” and you can move the popover out of the way, so that you can see your lyrics. Same is true for all popovers – look for the vertical dots and you'll be able to move them where you want.