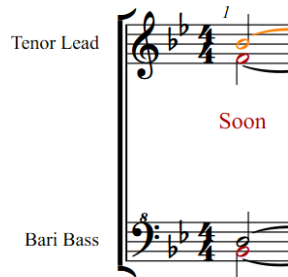
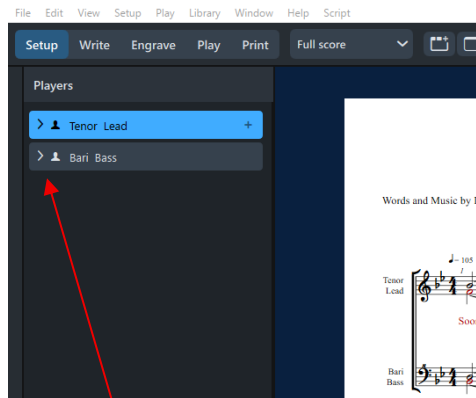


Edit Part Names

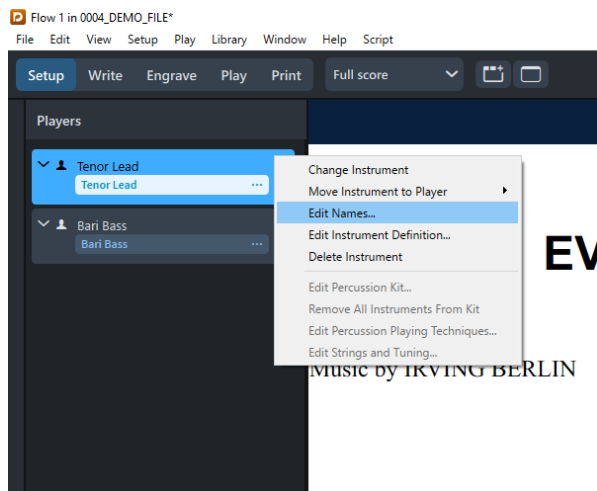
When importing Music XML files from Finale you will probably find that the part names are not in their correct position next to the first system.



Fixing this is done in Setup Mode. Click “Setup” at the top of the screen. Once you are in Setup Mode: Select the Window Menu then select “Show Left Zone”. You will see this:



The arrows next to the words Tenor Lead and Bari Bass will bring up a drop down menu when you click on them. To start, click the arrow next to Tenor Lead, then click on the three dots in the white area labeled Tenor Lead



From the menu, select “Edit Names”

You'll see an Edit Instrument Names dialog box. No, we don't play instruments, but the dialog is the same whether for instruments or vocal music.

The screenshot shows the 'Edit Instrument Names' dialog box for an instrument named 'Lead'. The 'Editing' section has 'Singular names' selected. The 'Full name' section has a text input field containing 'Tenor Lead'. The 'Short name' section has an empty text input field. The 'Show transposition' section has 'Never' selected. The 'Save as default for instrument' checkbox is unchecked. The 'Reset to Default' button is visible. The 'OK' and 'Cancel' buttons are at the bottom right.

Full part name goes in the white box on the top; short name is the white box at the bottom.

Click in the top box, then make the needed changes to have the word Tenor on top of the word Lead. The bottom box, for short name, is optional. If you fill it in, use T. for tenor and L. for lead. When done it should look like this.

The screenshot shows the 'Edit Instrument Names' dialog box for an instrument named 'Lead'. The 'Editing' section has 'Singular names' selected. The 'Full name' section has a text input field containing 'Tenor Lead'. The 'Short name' section has a text input field containing 'T. L.'. The 'Show transposition' section has 'Never' selected. The 'Save as default for instrument' checkbox is unchecked. The 'Reset to Default' button is visible. The 'OK' and 'Cancel' buttons are at the bottom right.

When all is correct, click OK

Now follow the same steps for Bari and Bass. When done you should have this:

Edit Instrument Names

Editing instrument: Bass

Editing: Singular names Plural names

Full name

A| (None) Staff Labels 10.0pt 100% 0.00pt Times New R... Regular 0.00pt 100%

Bari
Bass

Short name

A| (None) Staff Labels 10.0pt 100% 0.00pt Times New R... Regular 0.00pt 100%

Br.
Bs.

Show transposition: Always Follow Layout Options Never

☐ Save as default for instrument Reset to Default

? OK Cancel

Click OK when done. Don't worry about "Show Transposition" – that's for transposing instruments, and it has to do with whether your score says, for example, Clarinet in Bb, or Bb Clarinet, or just says Clarinet. It doesn't apply to barbershop.