
Brackets for Enharmonic Notes

In barbershop it's common to put brackets around enharmonic notes happening in the same part in adjacent chords.

Example – enharmonic spelling in the tenor part, Bb and A#

Tenor
Lead

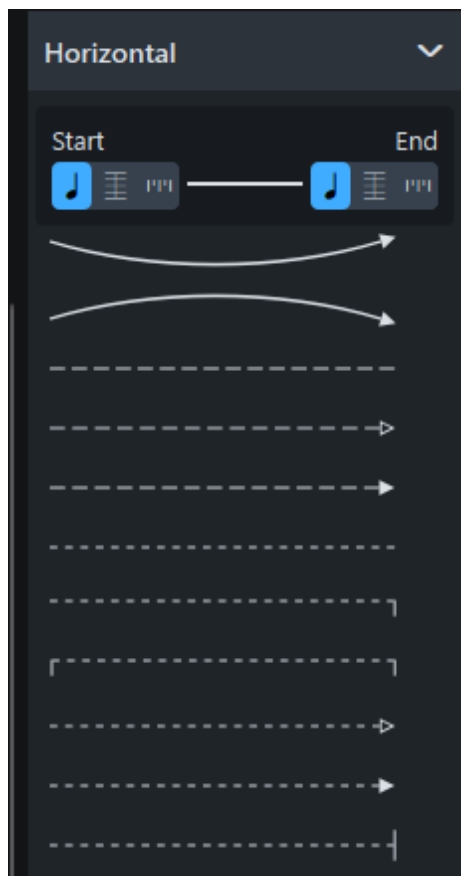
Bari
Bass



The image shows two staves of music. The top staff is for Tenor and Lead, and the bottom staff is for Bari and Bass. Both staves are in 4/4 time and have a key signature of one flat (Bb). The Tenor staff shows a Bb note in the first measure and an A# note in the second measure, both marked with a '2' below them. The Bari staff shows a Bb note in the first measure and an A# note in the second measure, both marked with a '2' below them. A large bracket on the left side of the Tenor staff groups the two measures, and a similar bracket is on the left side of the Bari staff.



Creating the bracket is done with the Line Tool. Click the icon, in the Notations Panel in the right-hand zone. There are settings for horizontal and vertical lines. Click the down arrow next to the word Horizontal to open it, if it isn't open already.



STEP 1 - Select the notes you want to bracket. Click the first, Ctrl-click (Win) or Cmd-click (Mac) the second.



STEP 2 - Tell Dorico where you want the bracket to start and end. In the Lines Palette, look for the words “Start” and “End” at the top.



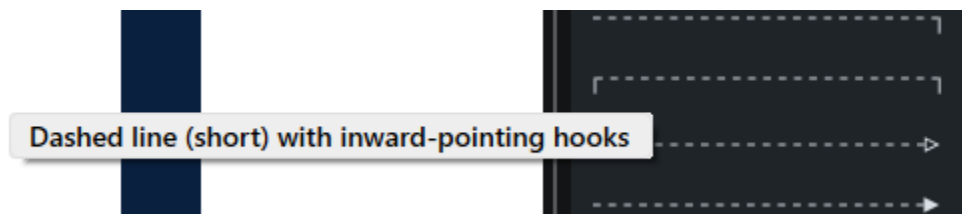
The three icons beneath the words Start and End correspond to (left to right)

- Attach to a notehead
- Attach to a bar line
- Attach to a rhythmic position

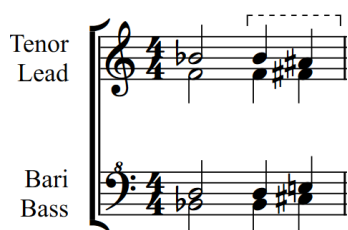
Move the mouse over them to get a tool tip with this information.

For both start and end, select the choice on the **far right: attach to rhythmic position**.

STEP 3 – Select the bracket by clicking on the one you want. Moving the mouse over the various lines and brackets will give you a short description of them.



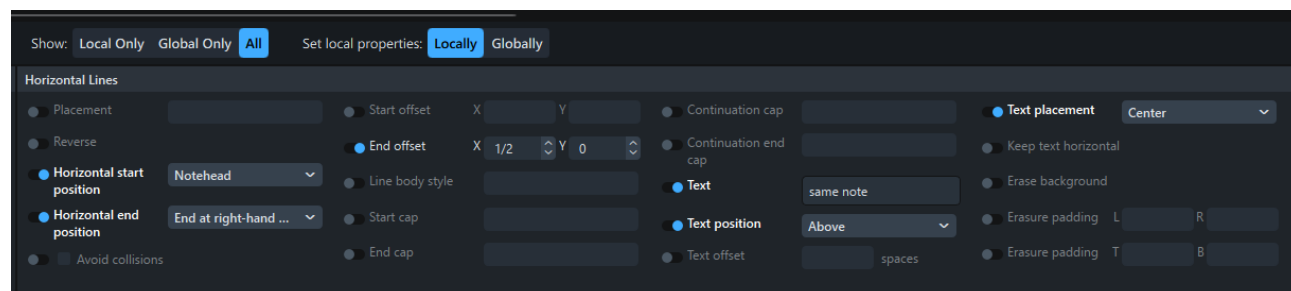
This is the result.



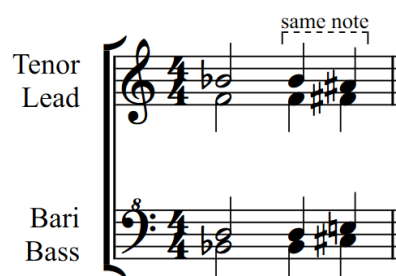
In Pro and Elements, you can use the Properties Panel to modify the positioning and even add text. Select Engrave Mode, click on the bracket to select it, then open the Properties Panel (Ctrl-8 on Windows, Cmd-8 on Mac). The settings will be under “Horizontal Lines”. You can place the bracket above or below the staff,

modify the horizontal and vertical position of the bracket relative to the notes, add text, and change the placement of the text you've added. SE has no Engrave Mode, so these fine modifications aren't possible in SE.

I started with the result above, then applied these settings in the Properties Panel. Click the button next to the setting you want to activate it, then select the value you want. The bracket will change to reflect your choices.



Using the settings seen here, I got this result.



For the offsets, X = horizontal position and Y = vertical position. The measurements are in spaces -- 1/2 space in this case. As a unit of measurement, one space = the middle of one staff line to the middle of the next staff line. You don't have to do the math – let Dorico do it!

Use the Properties Panel rather than manually moving the bracket and using system text to add text. Dorico will handle all the spacing and you'll get a more consistent result, in less time.

This procedure will always place the bracket above the staff. If you need it to go below the staff – type the letter F (for flip) to put the bracket below the staff.