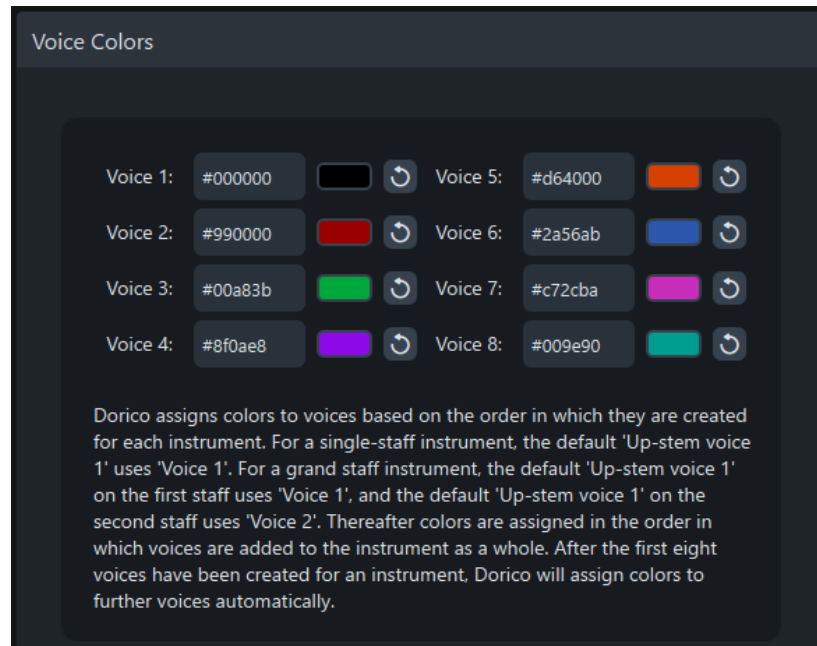

Add Colors to Notes

Many arrangers like to assign a different color to each voice part. In Finale this was a straightforward procedure. In Dorico it can be done, but it's a little more involved.

Dorico lets you choose what colors you want for each voice. This is done in Preferences / Voice Colors.



Note what Dorico says, however. The user can choose the colors but **Dorico assigns the colors**.

The default voice for each staff is always up-stem voice 1. When you add a down-stem voice, that will be down-stem voice 1. Tenor and bari are always up-stem voice 1. Lead and bass are always down-stem voice 1. Again, Dorico is different from Finale in this way. So what do you do if you want to assign a different color for each part? You can use the Properties Panel to assign colors.

Where to find the Properties Panel: In Write Mode Ctrl-8 (Win) or Cmd-8 (Mac) will display it. What actually shows in the Properties Panel depends on what's selected. For this demo I'll change the colors for the bass clef notes.

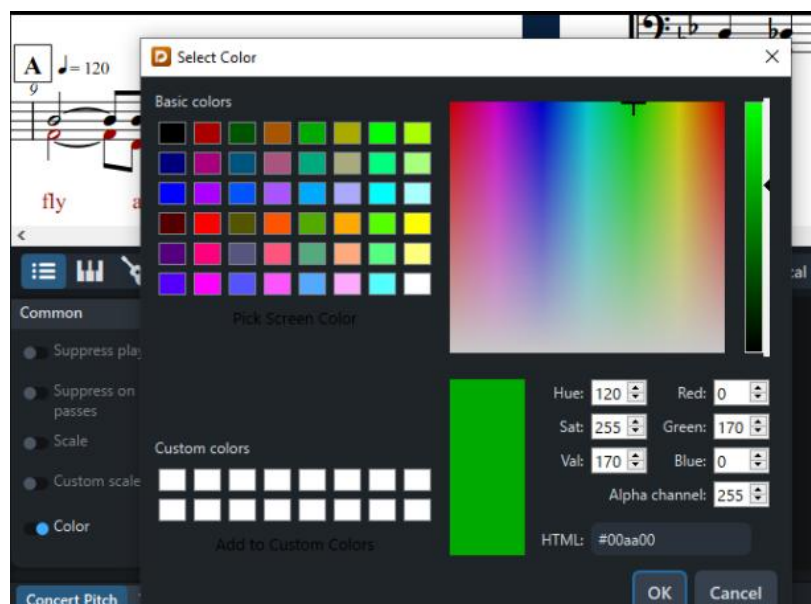
Enter your notes in the bass clef in Dorico's standard voices -- up-stem voice 1 and down-stem voice 1

First, I'll change the baritone. Select the baritone notes.

- In Write Mode, click and drag around the first measure of bass clef notes to select them. Then select: Edit Menu / Select to End of Flow. This highlights the entire bass clef.
- With the notes selected: right click once. Select: Filter / Voices / Up-Stem Voice 1-- the baritone notes will be highlighted



With the baritone notes highlighted: Ctrl-8 (Win) or Cmd-8 (Mac) to open the Properties panel. At the far left, under "Common" there is a switch labeled "Color". Click it and it will turn blue - that means the control is activated. Double click on the rectangle next to "Color" and you'll get a color palette.



Choose a color then click OK.

The baritone notes will be colored whatever you have chosen



Now repeat the process with the bass notes.

- Select the entire bass clef
- Filter for Down-Stem Voice 1
- Open the Properties Panel and assign the color you want.



When using Print Mode to print out or create a PDF, be sure to select “Mono” so that the colors don’t print.

You can use the Properties Panel at any time to turn the colors off and return them to their Dorico defaults. For this example, select the entire bass clef, open the Properties Panel, then click the “color” switch to deactivate it. The bass and bari will return to their Dorico defaults.