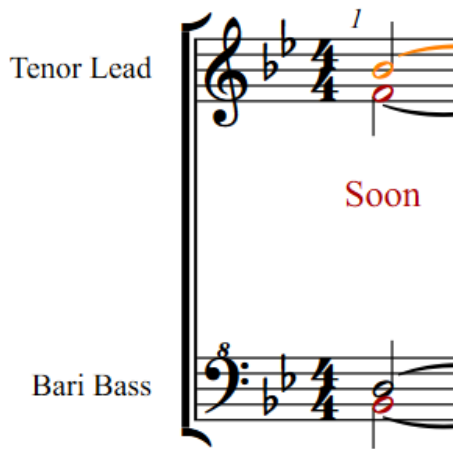


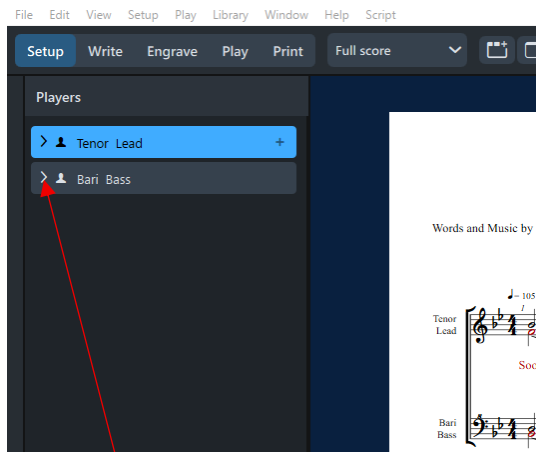
Edit Part Names

When importing Music XML files from Finale you will probably find that the part names are not in their correct position next to the first system.



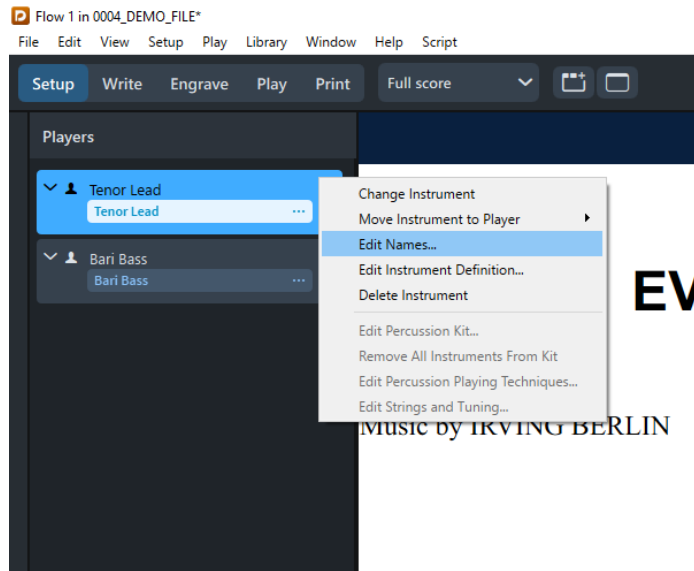
Fixing this is done in SETUP MODE. Click "Setup" at the top of the screen

Once you are in Setup Mode: Select the Window Menu then select "Show Left Zone". You will see this:

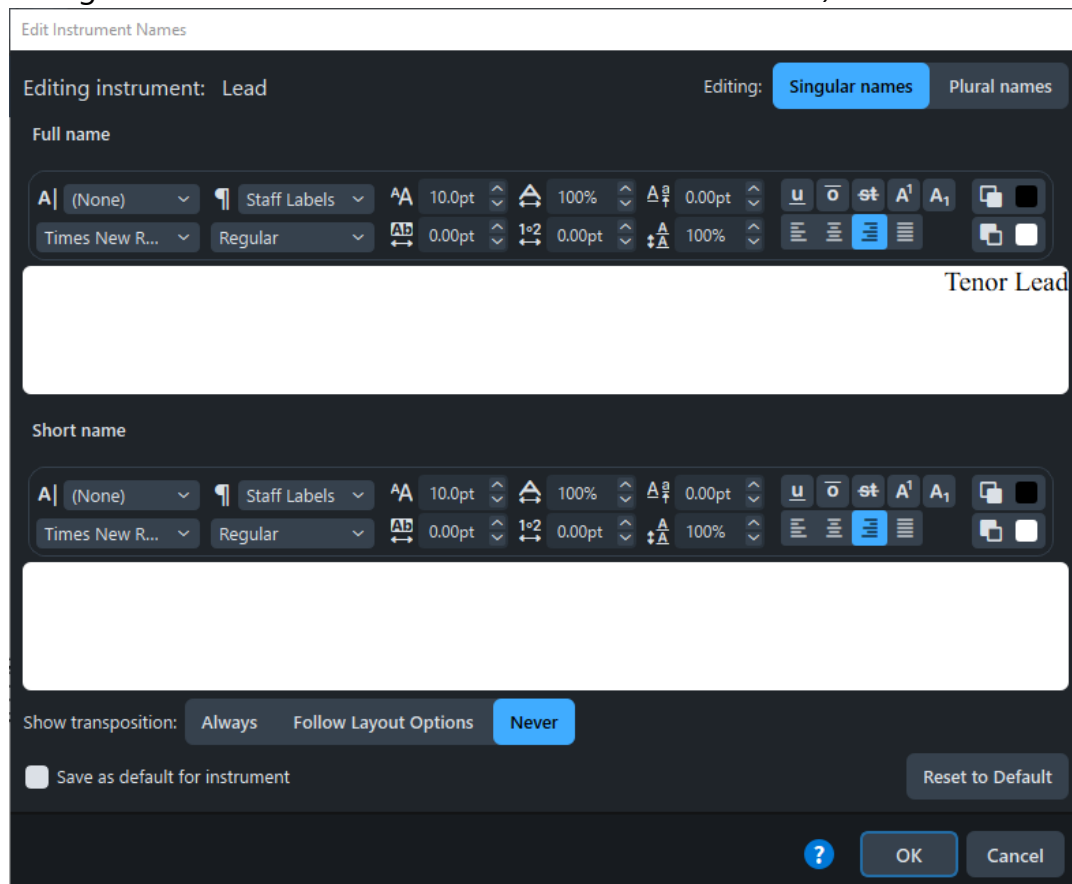


The arrows next to the words Tenor Lead and Bari Bass will bring up a drop down menu when you click on them. To start, click the arrow next to Tenor Lead, then click on the three dots in the white area labeled Tenor Lead

From the menu, select “Edit Names”



You'll see an Edit Instrument Names dialog box (no, we don't play instruments, but the dialog is the same whether for instruments or vocal music)



Full part name goes in the white box on the top; short name is the white box at the bottom.

Click in the top box, then make the needed changes to have the word Tenor on top of the word Lead. The bottom box, for short name, is optional. If you fill it in, use T. for tenor and L. for lead. When done it should look like this.

Edit Instrument Names

Editing instrument: Lead

Editing: Singular names Plural names

Full name

Tenor
Lead

Short name

T.
L.

Show transposition: Always Follow Layout Options Never

☐ Save as default for instrument

Reset to Default

OK Cancel

When all is correct, click OK

Now follow the same steps for Bari and Bass. When done you should have this:

Edit Instrument Names

Editing instrument: Bass

Editing: Singular names Plural names

Full name

Bar
Bass

Short name

Br.
Bs.

Show transposition: Always Follow Layout Options Never

☐ Save as default for instrument

Reset to Default

OK Cancel

Click OK when done. Don't worry about "Show Transposition" – that's for transposing instruments, and it has to do with whether your score says, for example, Clarinet in Bb, or Bb Clarinet, or just says Clarinet. It doesn't apply to barbershop.